

## Technical data sheet - TXD Telescopic Platform Double row depth system



### Introduction

A double depth retractable seating system which allows optimum space utilization where ceiling height is an issue. TXD is a durable, low maintenance system, refined enough for education, arts and conference facilities but tough enough for arenas. Designed for low maintenance and a long life, TXD delivers strong financial benefits to owners and operators.

### Features

- Architectural levels of finish and refined detailing
- Available with a wide choice of chairs
- Dynamically correct stiff structure with built in automatic row locks
- Cushioned, row to row contact to minimize noise
- Power operated opening/closing system
- 10 year guarantee on structure



Robust spring and gravity operated row locking system to lock opened rows securely in place, even in seismic areas.



Designed to eliminate metal-to-metal contact to reduce wear, warping and noise.

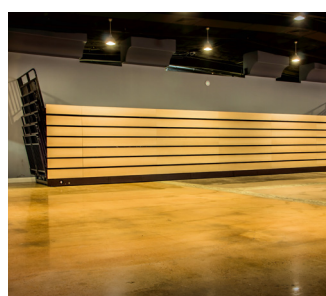


Bolted construction is continuously adjustable throughout system life to keep system running smoothly and reduce risk of wear or jamming.

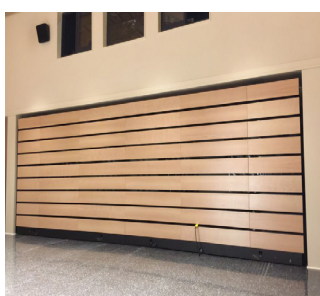


Diagonal bracing members manufactured from strong steel channel with secondary bracing for very large systems.

### Storage Options



**Type F** - Floor and wall fixed. Stays in place once closed.



**Type R** - Recessed unit - slides back into a recess, or under a balcony once closed.

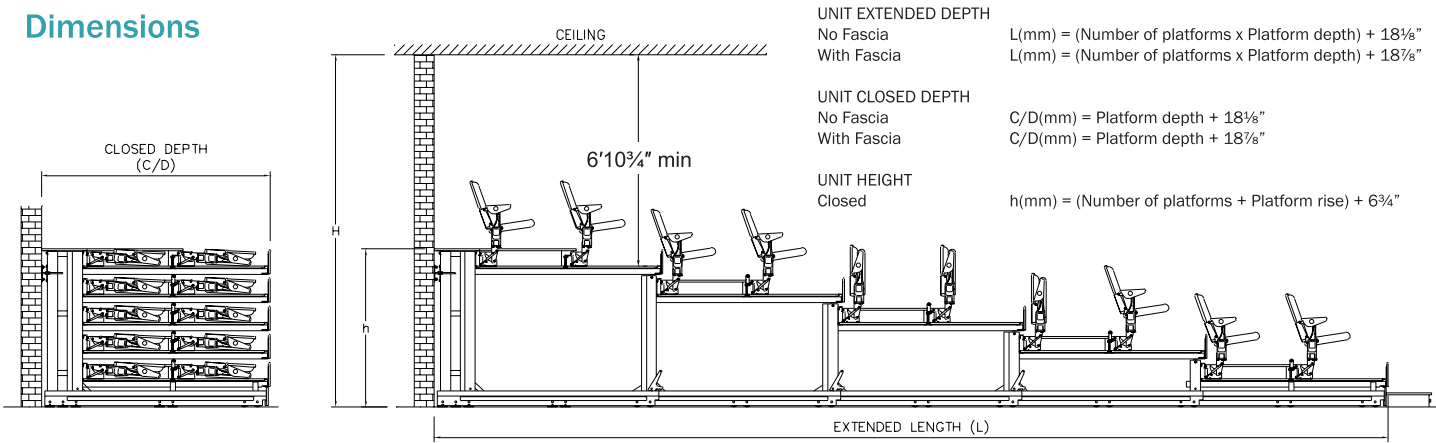


**Type M** - Mobile. Once closed, units can be specified to be moved via fork lift truck.



**Type V** - Travelling unit which allows movement as a complete bank, forwards and backwards, from its stored position.

Dimensions



Platform depths

66 7/8", 70 7/8". Other depths available in special circumstances. For row depths compatible with each chair type, please refer to the table on the right.

Platform rises

11", 11 3/4", 12 5/8", 13 3/8". Other platform rises available in special circumstances.

Number of rows

If more than five platforms (ten rows of seats) are required, please consult Audience Systems.

	Platform depth (mm)	
	66 7/8"	70 7/8"
Espace 628 / Evolve / standard geometry	✓	✓
Espace 628 / Evolve / upright geometry	✗	✓
Espace 628T	✓	✓
Espace 628 High Back / CC	Check with Audience Systems	
Eclipse	Check with Audience Systems	
Recital	Check with Audience Systems	
Accolade	✗	✓
Zenith	✓	✓
Alpha	✗	✓

Platform Opening and Closing Options



Manual operation via removable pull handles (units up to 6m wide with up to three platforms only).



Power operation - Pendant control operating friction power drive. See separate datasheet for full specification.

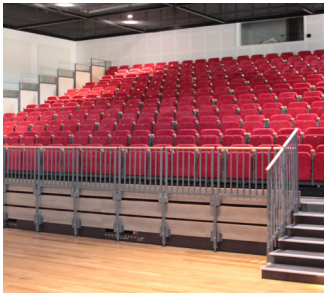


Power truck operation.

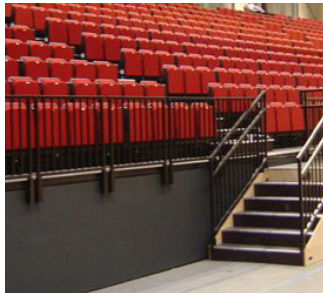
Special Configurations



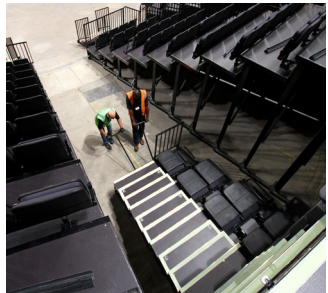
Partial Opening System - A mechanical locking system allowing the platforms to be safely opened to a specified number of rows, starting at the front.



Truncation - Allows the platforms to be safely opened to a specified number of rows, starting at the back. Posts are provided to safely support the open platforms.



Permanent Truncation - front row permanently raised to improve sightlines, or to allow for additional seating in front.



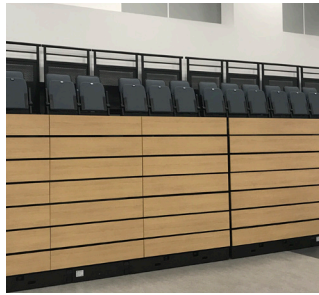
Tapered units - to help create curves and bowl shapes.



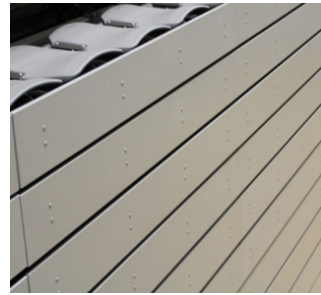
## Fascias



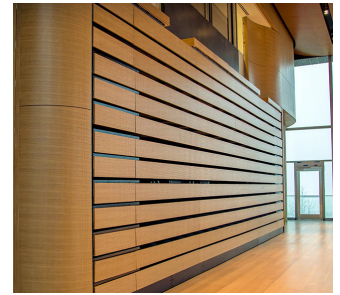
Closed unit with no fascias



Standard fascias in 5/8" MDF, double faced with melamine, oak finish. Removable infills at aisle positions.



Fascias with plain melamine finish. (Those shown are through bolted for additional strength in a ball sport venue.)

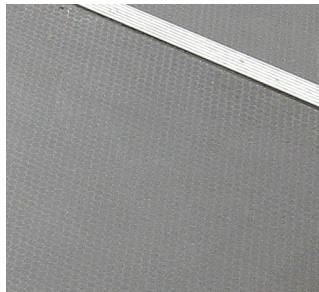


Custom finishes - please ask us about custom finishes and materials to suit your interior.

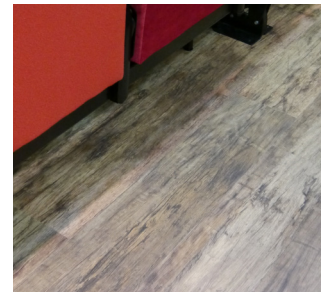
## Deck Finishes and Trims



**Carpet** - Contract grade, heavy duty, fire retardent carpet chosen from our standard range or custom carpet if suitable.



**Phenolic Deck** - Brown, raised pattern phenolic coating, anti-slip.



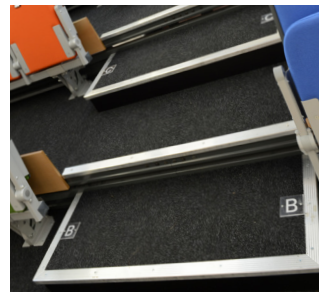
**Wood Effect Deck** - Hard wearing, premium grade wood effect flooring in vinyl in a wide choice of finishes.



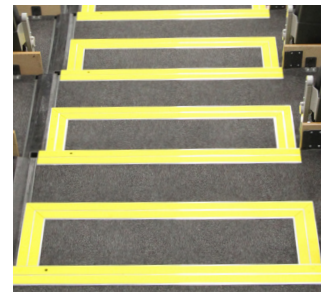
**Aisle Lights** - Low voltage, low glare, LED lighting with optional one hour battery back-up and dimming function.



Row letters on step riser.



**Standard Deck and Step Nosing** - Aluminium profile. Shown with row letters on step tread.

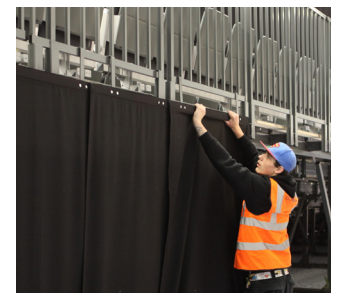
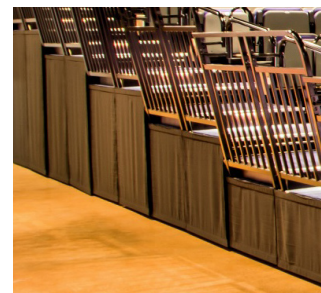


**Custom Nosing** - With infill to suit your interior.



**Photoluminescent Nosing.**

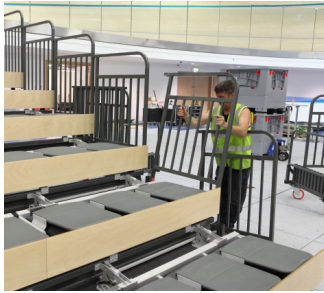
## Screening



To disguise and prevent access to understructure. Removable panels are available for the side, rear and front of the seating unit (if row 1 is raised) in 16mm MDF with melamine facing, oak finish. Other finishes on request. Removable drapes in fire retardent dimout fabric are also available for the side and rear of the seating unit.



## Rail Operation



**Removable side rails** - Removed before platforms are retracted and usually stored on a trolley.\*



**Self-storing side rails** - Angled to nest together when unit is retracted.



**Folding side rails** - Available where the rail is adjacent to an aisle.



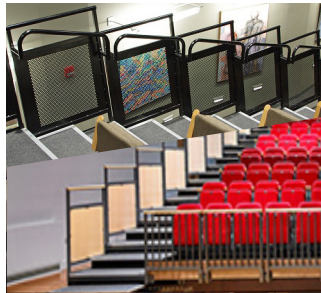
**Kick plates** - To guard the operational clearance where an aisle is adjacent to a wall.



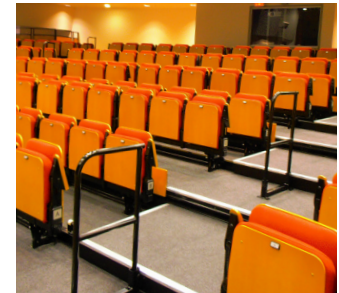
**Front rails.**



**Rear rails.**



**Hand rails** - Top: US ICC compliant hand rails. Bottom - Wooden rail tops.



**Center aisle rails.**

## Rail Design



**Type D** - Tubular steel infill.



**Type E** - Perforated steel infill.



**Type B** - MDF infill, faced with melamine (finish: oak) - other finishes on request.

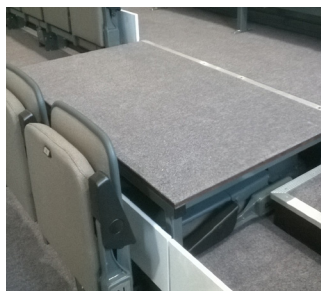


**Custom** - Infill panels in special materials to co-ordinate with your interior.

## Other Items



**Trolleys** - for rails, aisle infills and any other ancillary items.



**Removable plinths** - typically for a sound desk or wheelchair position.



**Deck infills** - hinged steel, or removable rubber to create join between two adjacent mobile units.

\*Where removable rails are included, the telescopic system will include anchor points to facilitate the use of a standard restraint belt.



## Chairs

All chairs are folded down using a release lever prior to the platforms being retracted (near right).

An optional extra row can be added to the front of the system (far right).

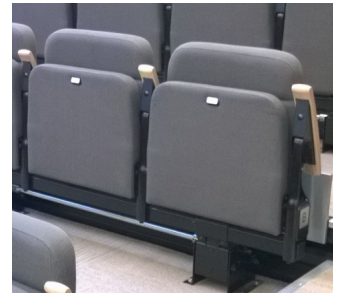
See separate datasheets for full details of each chair, and a full list of available options.



Recital



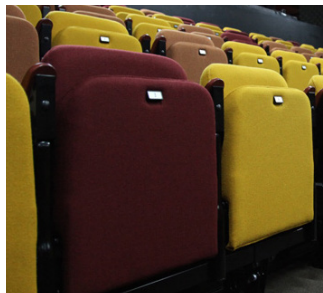
Eclipse



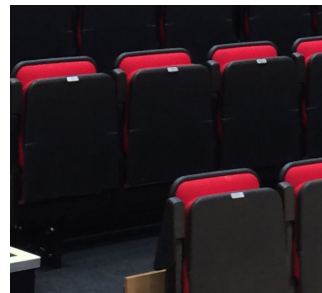
Espace 628CC



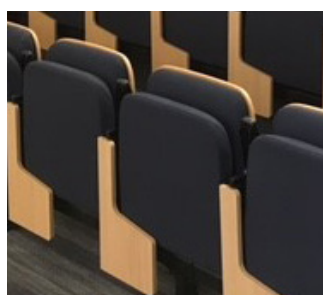
Espace 628 High Back



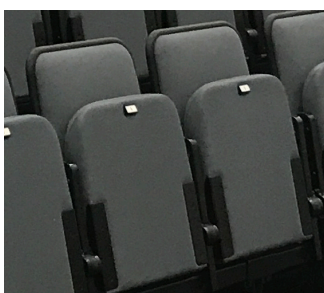
Espace 628



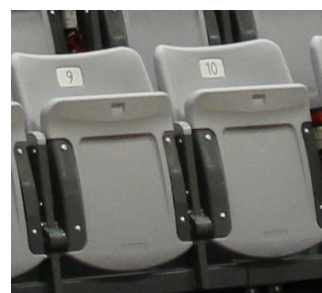
Espace 628T



Evolve



Accolade



Zenith



Alpha



## Material Specification

### Finishes

<b>General steelwork</b>	Multistage process comprising of chemical pre-treatment and epoxy powder coating, standard color RAL 9005 matt black
<b>Front beam</b>	Multistage process comprising of chemical pre-treatment and epoxy powder coating, standard color RAL 9005 matt black
<b>Central deck beams</b>	Multistage process comprising of chemical pre-treatment and epoxy powder coating, standard color RAL 9005 matt black
<b>Rear beam</b>	Pre-galvanized standard or epoxy powder coating, color RAL 9005 matt black, as option.

### Specification

<b>Column</b>	Platform 1: 3 <sup>7</sup> / <sub>8</sub> " x 2" x 1 <sup>1</sup> / <sub>8</sub> ", R.H.S (BS EN 10219-1). Platforms 2-5: 3 <sup>7</sup> / <sub>8</sub> " x 2" x 1 <sup>1</sup> / <sub>8</sub> ", R.H.S. + 2" x 2" x 1 <sup>1</sup> / <sub>8</sub> " S.H.S. (BS EN 10219-1).
<b>Column foot</b>	Pressed steel, 1 <sup>1</sup> / <sub>8</sub> " thick (BS EN 10025) + 2" x 2" x 1 <sup>1</sup> / <sub>8</sub> " S.H.S. (BS EN 10219-1) stiffener.
<b>Wheels</b>	3 <sup>7</sup> / <sub>8</sub> " x 1 <sup>5</sup> / <sub>8</sub> " wide, with polyurethane tread, c/w needle bearing (7 wheels per column).
<b>Braces</b>	Platforms 2-5: 2" x 1 <sup>3</sup> / <sub>4</sub> " x 1" roll formed 'C' section (BS EN 10025).
<b>Front beam</b>	3" x 2 <sup>7</sup> / <sub>8</sub> " x 1 <sup>1</sup> / <sub>8</sub> " roll formed section (Z35 steel).
<b>Front central beam</b>	5" x 1 <sup>3</sup> / <sub>4</sub> " x 1 <sup>1</sup> / <sub>8</sub> " formed section (Zinc plated mild steel; EN 10147).
<b>Rear central beam</b>	5 <sup>1</sup> / <sub>8</sub> " x 3 <sup>7</sup> / <sub>8</sub> " x 1 <sup>1</sup> / <sub>8</sub> " formed section (BS EN 10025).
<b>Rear beam</b>	6 <sup>7</sup> / <sub>8</sub> " x 2" x 1 <sup>1</sup> / <sub>8</sub> " roll formed section (Zinc plated mild steel; EN 10147).
<b>Deck boards</b>	3 <sup>4</sup> / <sub>4</sub> " phenolic faced, WBP combi plywood or carpeted Finnish plywood.
<b>Rails</b>	Outer framework of rail: ERW 1 <sup>1</sup> / <sub>4</sub> " x 1 <sup>1</sup> / <sub>4</sub> ", 14 SWG. Vertical bars - 3 <sup>4</sup> / <sub>4</sub> " x 3 <sup>4</sup> / <sub>4</sub> " x 16 SWG SQ tube. Horizontal Bars - 1 <sup>1</sup> / <sub>2</sub> " x 3 <sup>4</sup> / <sub>4</sub> " x 16 SWG REC tube. All round tube (type E only) is ERW 38mm x 2mm. Steel Grade: BS6323 part 5: 1982 ERW1.
<b>Vertical load</b>	Perforated steel sheet is to BSEN10130:1999 DC01. 83.5 lb/ft <sup>2</sup> (104.4 lb/ft <sup>2</sup> where applicable).
<b>Horizontal load</b>	7.5% of vertical load.
<b>Row locks</b>	Heavy duty, 1 <sup>1</sup> / <sub>4</sub> " steel, foot level, automatic latch locks. Gravity operation with spring assistance. Heavy duty, 1 <sup>1</sup> / <sub>4</sub> " steel, vertical interlock at all column tops.
<b>Platform levels</b>	Cantilever slide arms transfer load onto 2 <sup>3</sup> / <sub>8</sub> " dia. nylon rollers. Platform loads are transferred through 1 <sup>1</sup> / <sub>2</sub> " dia. nylon rollers. Loads are transferred at 2 column positions and minimum 4 support positions.
<b>Power operation</b>	Friction drive consisting of two 6 <sup>1</sup> / <sub>4</sub> " dia. rubber rollers chain driven by a single or 3-phase motor. Standard motor size – 0.37kw single phase or 0.25kw 3-phase. Large units can be specified with a tandem frame incorporating two motors per unit.

### Standards

<b>Strength and stability</b>	The TX system can be supplied to comply with most worldwide standards.
<b>Flammability</b>	Decks and fascias can be supplied to an appropriate FR grade if required. Standard carpet is heavy duty contract quality conforming to BS5287 (BS4790 low radius of char) and BS 13501:2002 Euroclass C <sub>fl</sub> -s1 (sheet) or Euroclass B <sub>fl</sub> -s1 (tile).

### Notes

Floor construction and surface finish play an important role and greatly affect the operation of telescopic seating. A smooth, hard, level floor is an essential element, e.g. smooth concrete or hardwood are ideal surfaces. Please ask us for more details and point load information.

Full fascias are available for most standard combinations of row rise, row depth and chair type, but in a few cases only reduced height fascias may be possible. Please check with Audience Systems.

TX is only suitable for indoor environments.

**All information given above is for standard product. Please ask us about customization.**

Audience Systems Ltd reserves the right to change the design, specification or price of products without prior notice.