

## Technical data sheet - Benches for TX Telescopic Platform System

### Introduction

Retractable bench systems are the simplest and most flexible way to achieve different seating layouts. They are ideal for venues looking to increase their usage and revenue potential.

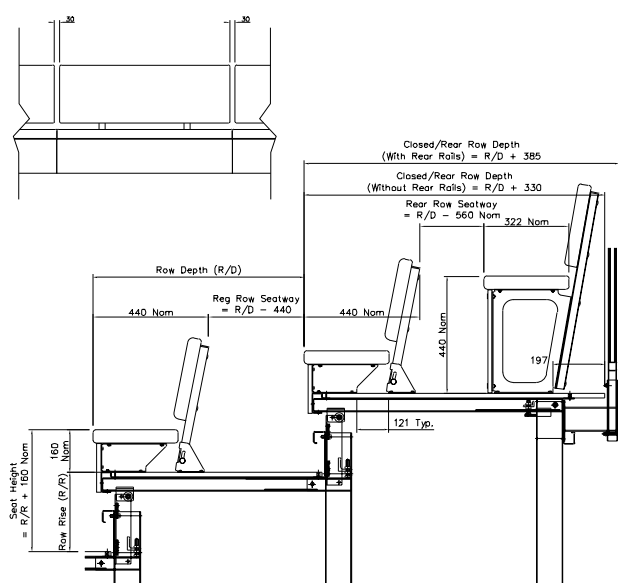
Audience Systems' TX platform understructure is precision engineered for an exceptionally long life and low maintenance - see separate datasheet for details.

### Chorus Bench

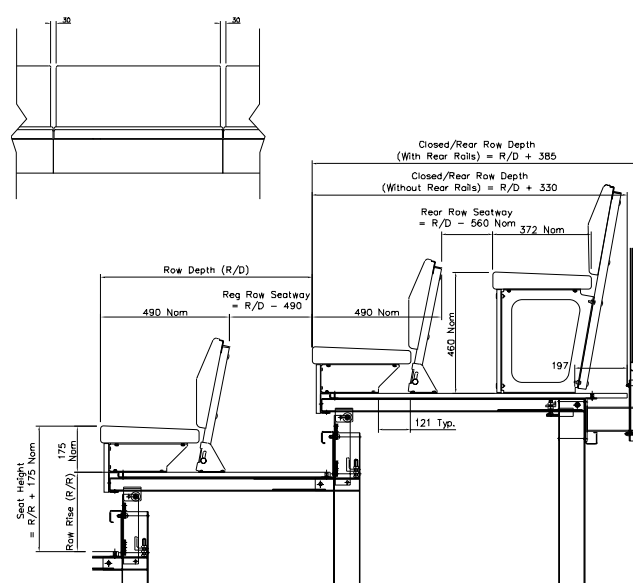
- Comfortable benches with contoured backrest
- Backrest folds back onto deck before platforms retract
- Choice of two designs: standard or enhanced
- Seat and backrest upholstered in fabric to customer choice and availability.
- Bench front fascia in MDF faced with melamine (standard finish: oak) and matching edge banding (as standard).



Note: Enhanced model shown



Standard model (Backrest height 315mm)



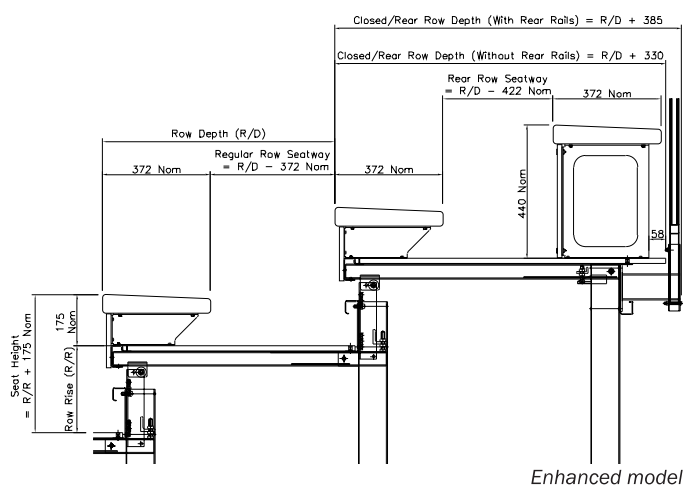
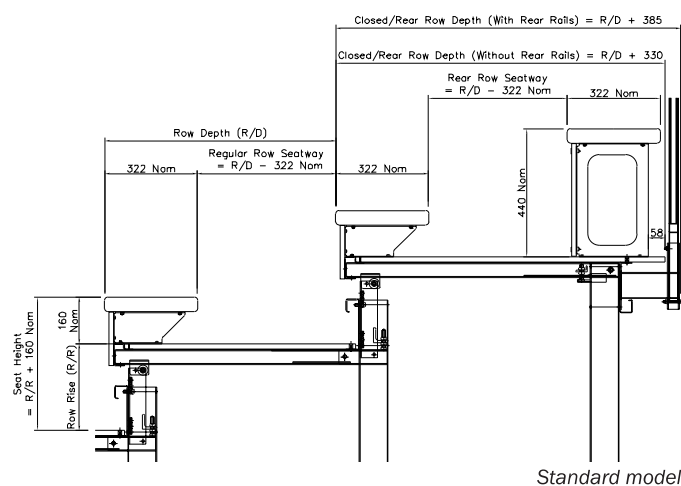
Enhanced model (Backrest height 345mm)

Height measurements are taken at seat centre. All dimensions are nominal. Note: it is sometimes necessary to increase the depth of the rear deck to achieve the required seatway in front of the rear row. This is considered on a case by case basis.

## Duet Bench



- Durable benches with choice of flat or contoured seat
- Seat upholstered in fabric to customer choice and availability.
- Bench front fascia in MDF faced with melamine (standard finish: oak) and matching edge banding (as standard).
- Matching infills available for aisle positions when platforms are closed
- Optional seat numbers



Note: Bench dimensions shown are for a TX unit with row depth of 800mm or more. For a 650mm row depth, a bench with a depth of 240mm can be specified. **Drawing available on request.**

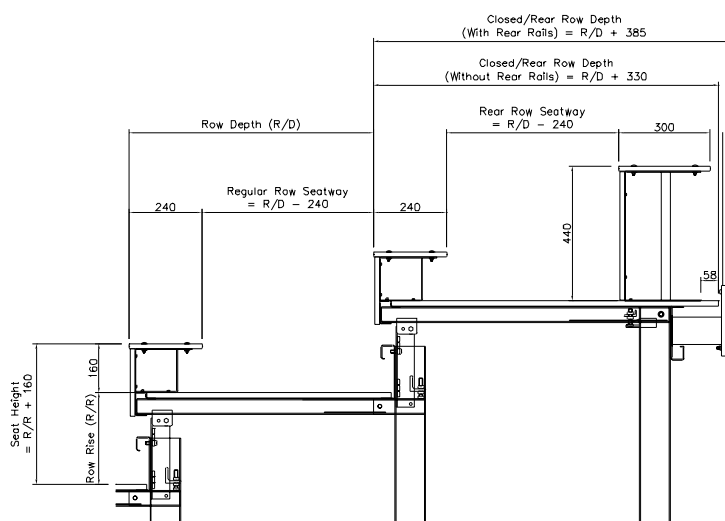
## Unity Bench



- Practical benches with a simple aesthetic
- Bench front fascia in MDF faced with melamine (standard finish: oak) and matching edge banding (as standard).
- Matching infills available for aisle positions when platforms are closed
- Optional seat numbers



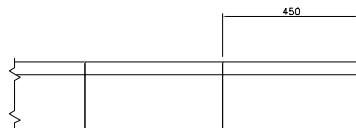
Note: Open unit shown without aisle infill panels (in stairway) removed.



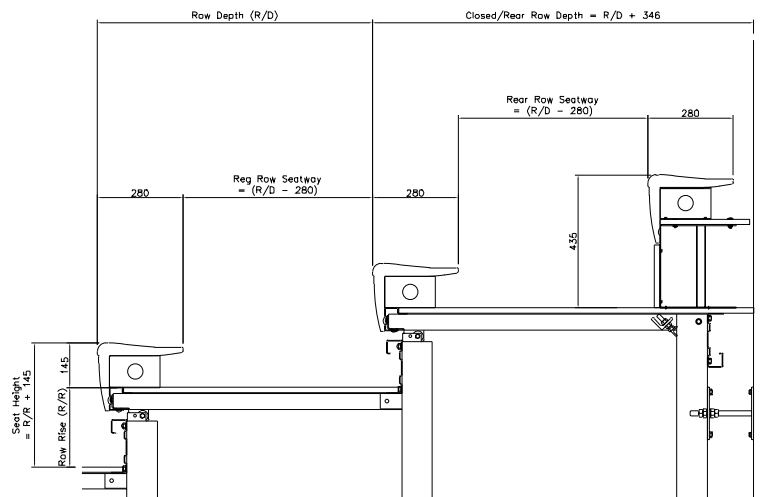
Height measurements are taken at seat centre. All dimensions are nominal.

Audience Systems Ltd reserves the right to change the design, specification or price of products without prior notice.

## Contour Bench

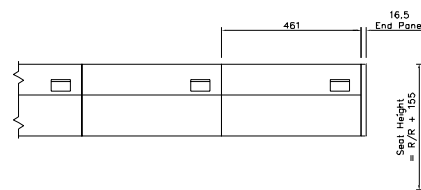


- Ergonomically contoured bench and fascia modules, 450mm wide
- Blow moulded, polyethylene construction for superb strength and support
- Ten standard colours (see colour chart for details)
- Colour-matched infills for aisle positions when platforms are closed

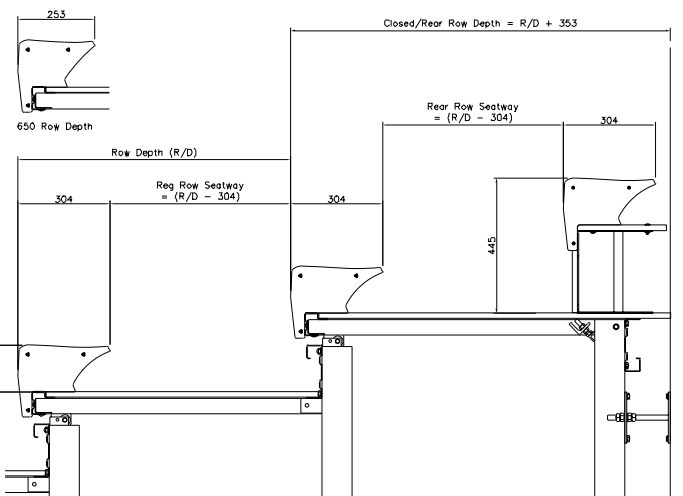


Height measurements are taken at seat centre. All dimensions are nominal.

## Profile Bench



- Injection moulded high strength polyethylene seat/fascia module
- Durable with five vertical and two lateral moulded ribs
- Anatomically contoured shape for increased comfort
- Toe space for increased leg room
- Full interlocking module to module design
- Separate fully enclosed end covers
- Recessed seat number location



Height measurements are taken at seat centre. All dimensions are nominal.