

Technical data sheet - Benches for TX Telescopic Platform System

Introduction

Retractable bench systems are the simplest and most flexible way to achieve different seating layouts.

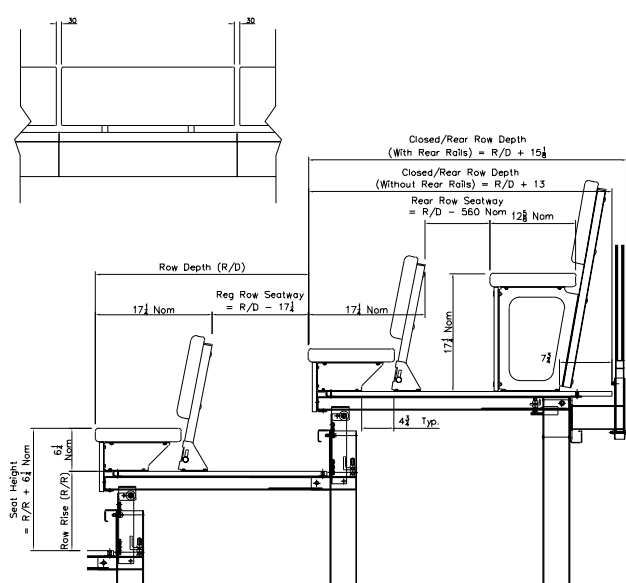
They are ideal for venues looking to increase their useage and revenue potential.

Audience Systems' TX platform understructure is precision engineered for an exceptionally long life and low maintenance - see separate datasheet for details.

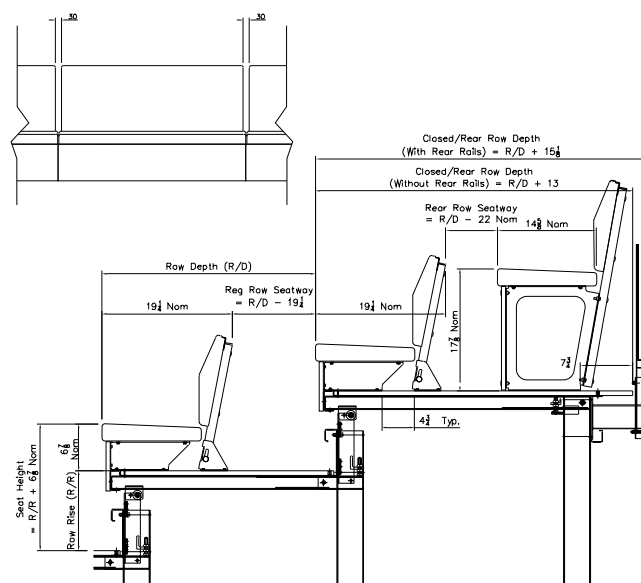
- Comfortable benches with contoured backrest
- Backrest folds back onto deck before platforms retract
- Choice of two designs: standard or enhanced
- Seat and backrest upholstered in fabric to customer choice and availability.
- Bench front fascia in MDF faced with melamine (standard finish: oak) and matching edge banding (as standard).



Note: Enhanced model shown



Standard model (Backrest height 12¾")



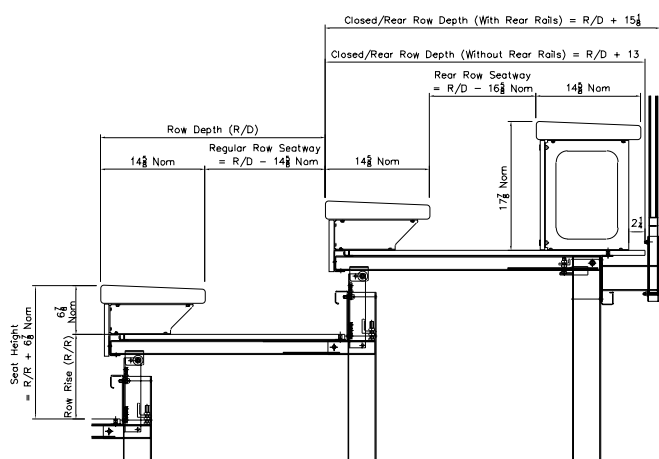
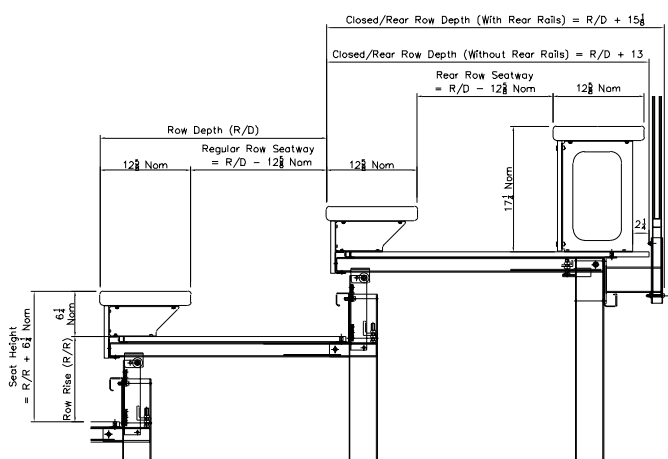
Enhanced model (Backrest height 13¾")

Height measurements are taken at seat center. All dimensions are nominal. Note: it is sometimes necessary to increase the depth of the rear deck to achieve the required seatway in front of the rear row. This is considered on a case by case basis.

Duet Bench



- Durable benches with choice of flat or contoured seat
- Seat upholstered in fabric to customer choice and availability.
- Bench front fascia in MDF faced with melamine (standard finish: oak) and matching edge banding (as standard).
- Matching infills available for aisle positions when platforms are closed
- Optional seat numbers



Note: Bench dimensions shown are for a TX unit with row depth of 31 $\frac{1}{2}$ " or more. For a 25 $\frac{5}{8}$ " row depth, a bench with a depth of 9 $\frac{1}{2}$ " can be specified. **Drawing available on request.**

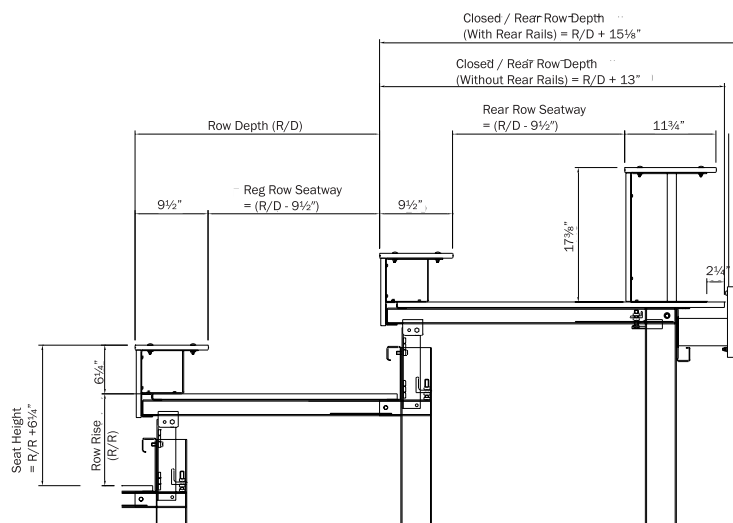
Unity Bench



- Practical benches with a simple aesthetic
- Bench front fascia in MDF faced with melamine (standard finish: oak) and matching edge banding (as standard).
- Matching infills available for aisle positions when platforms are closed
- Optional seat numbers



Note: Open unit shown without aisle infill panels (in stairway) removed.



Height measurements are taken at seat center. All dimensions are nominal.